

## Requirements for WEB Browser-Based Internet Printing

### Internet Printing

- ▶ Uses World Wide Web tools, programs, servers and networks
- ▶ Works for printers attached to servers locally or through networks
- ▶ Uses HTTP servers and browsers (although not exclusively) to provide print operations including
  - locating printers by attributes
    - ◆ *capabilities*
    - ◆ *geography*
    - ◆ *name*
  - launching a printer installation process on the client
  - printing jobs
  - cancelling jobs
  - monitoring and managing
    - ◆ *jobs*
    - ◆ *printers*
  - configuring printers
- ▶ Is independent of client and server operating systems

**Printer Working Group**



## Requirements for WEB Browser-Based Internet Printing

### What is Internet Printing?

Internet Printing is the application of World Wide Web tools, programs, servers and networks to allow "end-users" to print using methods and operations similar to those currently used for locally attached or LAN printing in the platform dependent OS. Internet Printing will include the use of HTTP servers and browsers to provide static, dynamic and interactive print services location, printer installation, selection and configuration as well as remote printer and print job monitoring.

**Printer Working Group**



## IPP Requirements - Roles and Tasks

- ▶ End-user
  - Finding and Locating Printers using WEB Browsers
  - Creating a local "instance" of a printer
  - Using a WEB Browser to view:
    - ◆ *Status of the printer*
    - ◆ *List of jobs*
  - Submitting a print job
    - ◆ *Using standard applications*
    - ◆ *Pushing or Pulling a pre-formatted document*
    - ◆ *Using a reference to an existing document not located on the client*
  - Viewing the status of a print job using WEB Browsers
  - Alerting due to printer errors, job errors and job compete
  - Cancelling his own print job
- ▶ Operator
  - Alerting due to printer & job error conditions
  - Changing some printer and job attribute
- ▶ Administrator
  - Printer installation and configuration
  - Access control lists
  - Defaults, templates, views
  - Charge-back, accounting

**Printer Working Group**

## Printer Locating & Selecting

The screenshot shows a Netscape browser window displaying the Lexmark "Select A Queue" page. The page title is "LEXMARK. Select A Queue". The main content area is titled "Please Pick Printer Queue and Press Select for Local System Setup". It lists several printer queues with their capabilities and locations:

Queue Name	Capabilities	Location	Printer Status	Queue Status
Marketing_a	B/W -- 300 DPI -- TRAY 1 Letter -- Courier 10 -- 12 Pages Per Minute	Printer located in Building 4 Room 12	Ready	Ready
Development_a	B/W -- 600 DPI -- TRAY 1 Letter -- Courier 10 -- 12 Pages Per Minute	Printer located in New York Office	Ready	Ready
Testing_a	B/W -- 1200 DPI -- TRAY 1 Letter -- Courier 10 -- 12 Pages Per Minute	Printer located in testing lab	Ready	Printing
Marketing_a	COLOR -- 600 DPI -- TRAY 1 Letter -- Times New Roman -- 3 Pages Per Minute	Printer located in room 22	Ready	Ready
Development_a	COLOR -- 600 DPI -- TRAY 1 Letter -- Times New Roman -- 3 Pages Per Minute	Printer located in room 33	Ready	Ready

Annotations on the screenshot:

- "Off the Shelf" Web Browser: Points to the Netscape browser window.
- Select Printer by Capability: Points to the "Queue Filters" section on the left.
- Select Printer by Model: Points to the "4039 Plus" printer icon in the "Queue Filters" section.
- Details: Points to the printer details for the "Marketing\_a" queue.
- Printer & Queue Status: Points to the "Queue Controls" section on the right.

**Printer Working Group**

## "Job Ticket" Creation

**Off the Shelf**  
Web Browser

Select the Store

Submit the Print Job

Select Print and Finishing Options

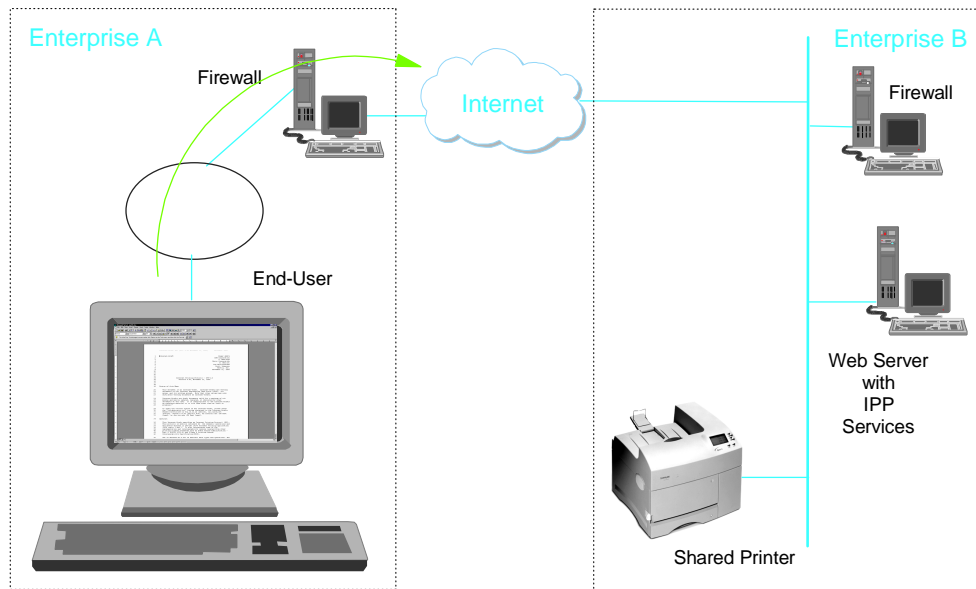
Shipping Options

Customer Information

Billing/Payment Information

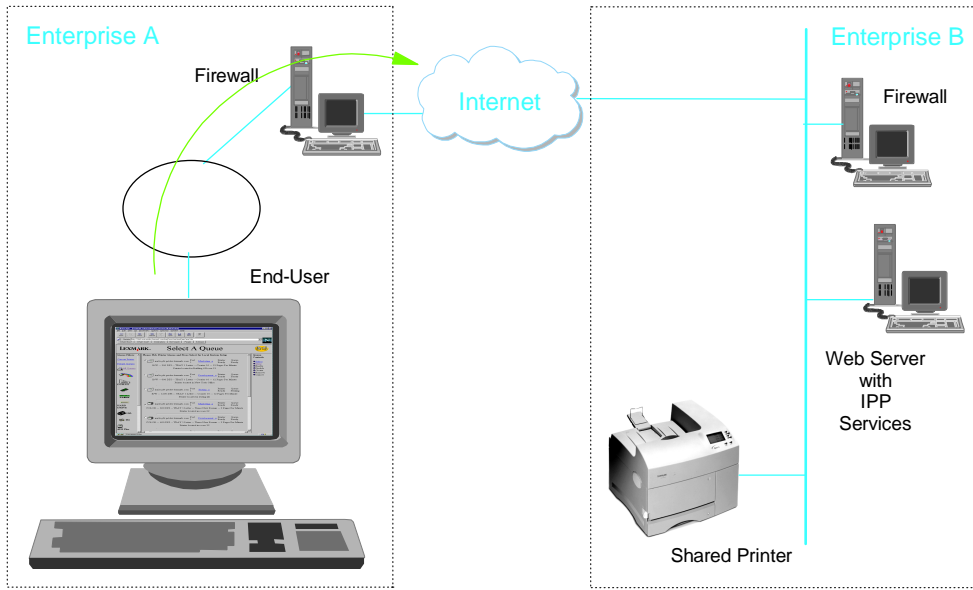
**Printer Working Group**

## Internet Printing - Application



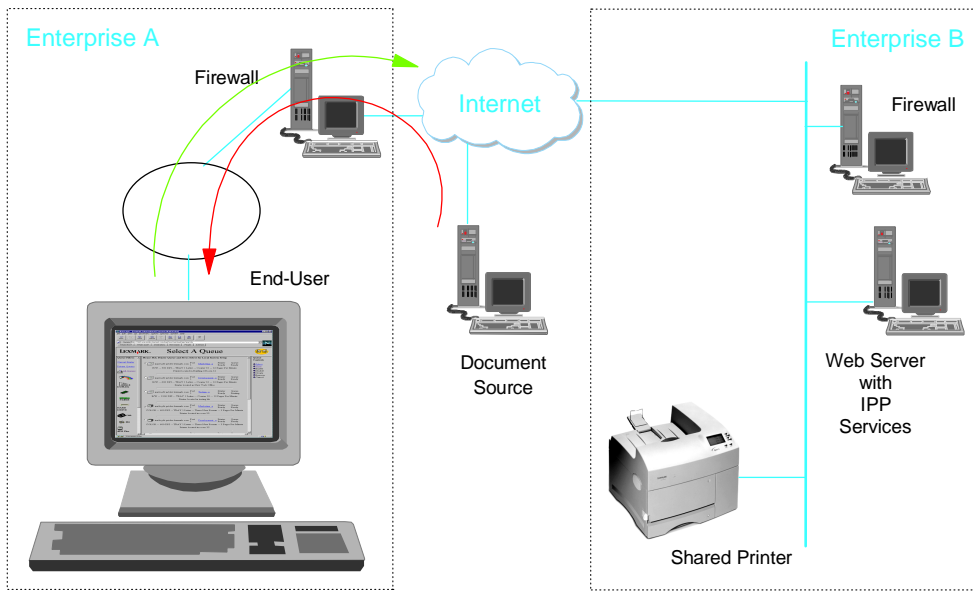
**Printer Working Group**

## Internet Printing - Pushing



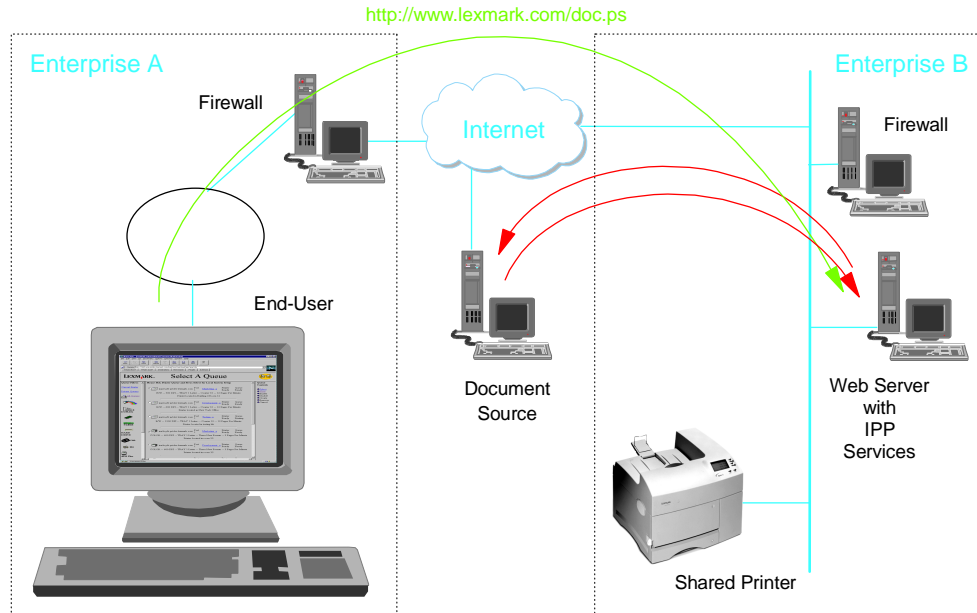
**Printer Working Group**

## Internet Printing - Pulling



**Printer Working Group**

## Internet Printing - By Reference



**Printer Working Group**

## IPP 1.0 Requirements - Objectives

- ▶ End-User Requirements Only
- ▶ Independent of
  - Client operating systems
  - Server operating systems
- ▶ Security
  - Authentication, Authorization, Privacy, Commercial Transactions
- ▶ Interaction with LPD
  - RFC 1179
  - Not backwards compatible
  - Will supplant LPD
- ▶ Firewalls
  - Protocol must pass through firewalls where enabled by the firewall administrator
- ▶ Internationalization
  - Must be enabled

**Printer Working Group**

## IPP Requirements - RFC1179

---

- ▶ RFC1179 designed for line printers
- ▶ Support for page printers is minimal
- ▶ Vendor extensions have been inconsistently added
  - (see <ftp://ftp.pwg.org/pub/pwg/ipp/historic/xopen-psis-xdpa/appendix-d-lpd-extensions.ps>)
  - Sun adds additional attributes
  - Xerox "buries" options in the *-Cclass* option
  - IBM adds
    - ♦ *extensions to the -o option*
    - ♦ *new options (-N, -T, -Z, -t, -n, -B)*
  - HP adds
    - ♦ *New control file extensions (R,A,"N B","N O",J)*
    - ♦ *extensions to the -o option*
  - Digital adds new control file extensions (>,<,A,B,D,E,F,G,K,O,S,X,Z,x,z)
- ▶ Conclusion -- RFC1179 not the place to start for an Internet Printing Protocol

***Printer Working Group***

